

Foam Bladder Tank

Model:PHYML200



Features

- Require less space than foam pump skid;
- Designed for maximum agent discharge;
- Permanently welded lifting lugs for easy tank movement and positioning;
- Tanks are Externally Red Epoxy coated;
-

Description

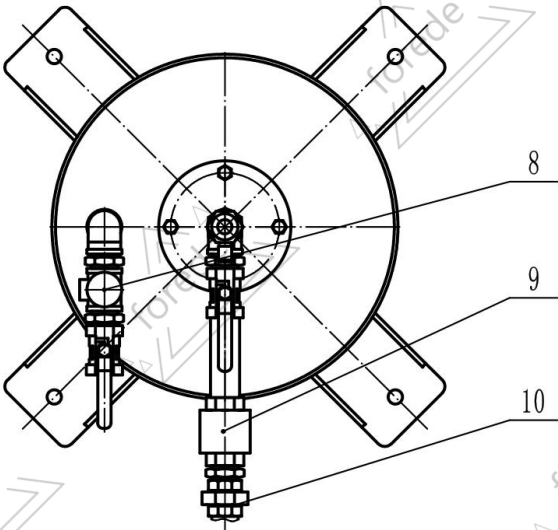
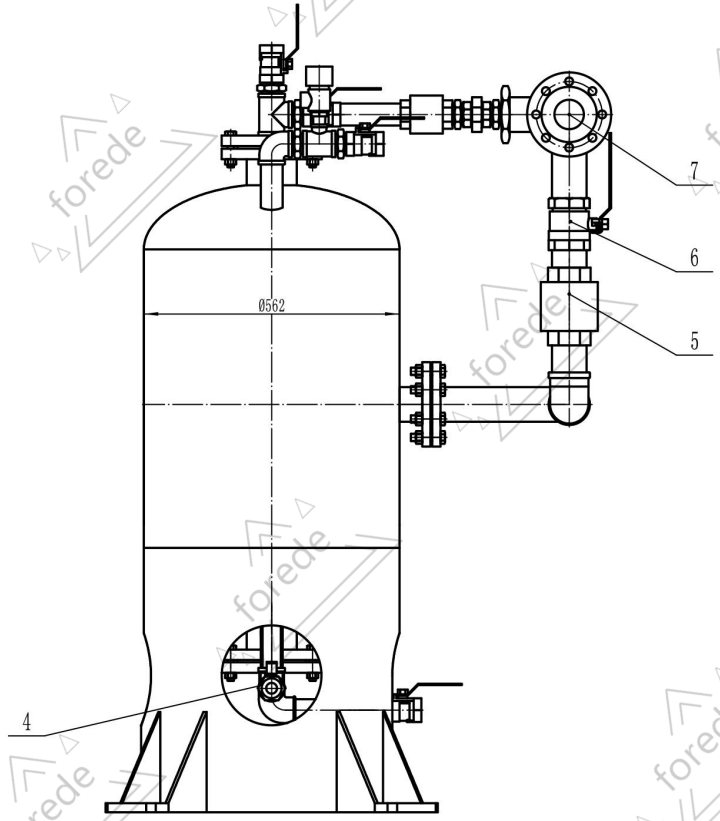
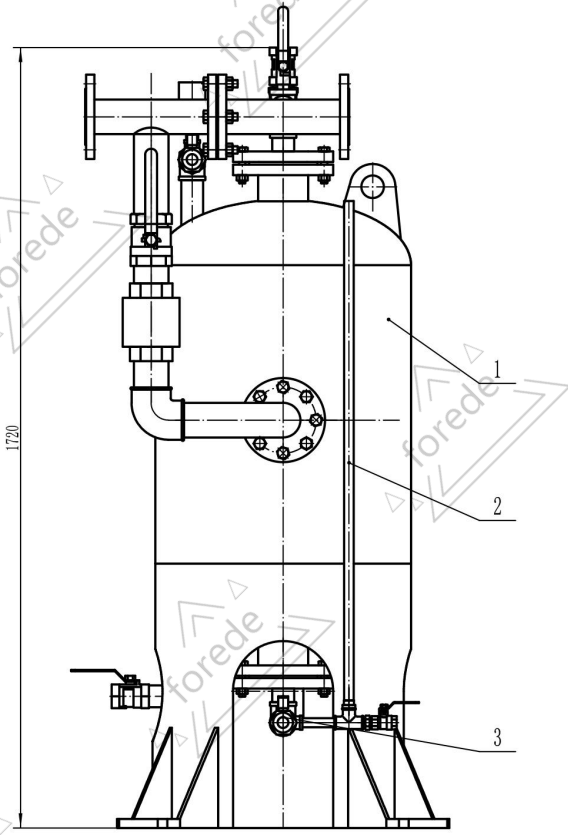
The Forede Pre-piped Bladder Tank is a complete self-contained proportioning system consisting of a bladder tank, ratio controller, and assembled piping. It is designed to inject foam concentrate into the water supply of a fire protection system and automatically proportions over a wide range of flow and pressures without the use of external power supply.

Specification

| Pre-piped Foam Bladder Tank | | |
|-----------------------------|--------------|-----------------|
| Material | Tank shell | Carbon steel |
| | Bladder | NBR Rubber |
| | Ball valves | Brass |
| | Check Valves | Brass |
| | Safety Valve | Brass |
| | Pipe | galvanized pipe |

| Model | Capacity | Flow Rate | W.Pressure | Mixing Ratio | Inlet/outlet |
|-----------------|----------|-----------|------------|--------------|--------------------|
| PHYML200 | 200 L | 4~8 L/S | 6 - 8 bar | 3% | 2.5 inch in flange |

Construction



| ITEM NUMBER | PART NAME |
|-------------|-------------------------|
| 1 | Tank shell |
| 2 | Liquid Lever Meter |
| 3 | Concentrate Drain Valve |
| 4 | Water Drain Valve |
| 5 | Check Valve |
| 6 | Water Inlet Valve |
| 7 | Proportioner |
| 8 | Safety Valve |
| 9 | Check Valve |
| 10 | Throttling Device |